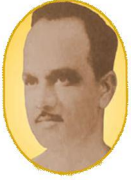


Akhil Bharatiya Maratha Shikshan Parishad's



Anantrao Pawar College of Engineering & Research, Parvati, Pune

Sr. No. 103, Parvati, Pune - 411 009. Tel.: 020-24218901/8959 Tele

Fax: 020-24213929 **Web.:** <http://www.abmspcoerpune.org> **Email:**

[abmspcoe@yahoo.com](mailto:abmspcoe@yahoo.com)

---

Approved by AICTE & Govt. of Maharashtra, Affiliated to Savitribai Phule Pune University Savitribai

Phule Pune University Identification No. PU/PN/Engg. /441/2012, DTE CODE:- EN 6794

---

## Research & Development Profile



**Prof. Dhananjay Patil**

**Experience: 1 Year**

[dpatil038@gmail.com](mailto:dpatil038@gmail.com) ,

**Department of Civil Engineering**

### International Journal Publication Papers:

1. "Effect of Pedestrian Movement on Traffic Los" in IJSTE - International Journal of Science Technology & Engineering | Volume 3 | Issue 09 | March 2017